

TOORX
PROFESSIONAL LINE

INSTRUCTION



CLX8000
LED



Cod : GRLDTOORXCLX8000L

Rev : 01

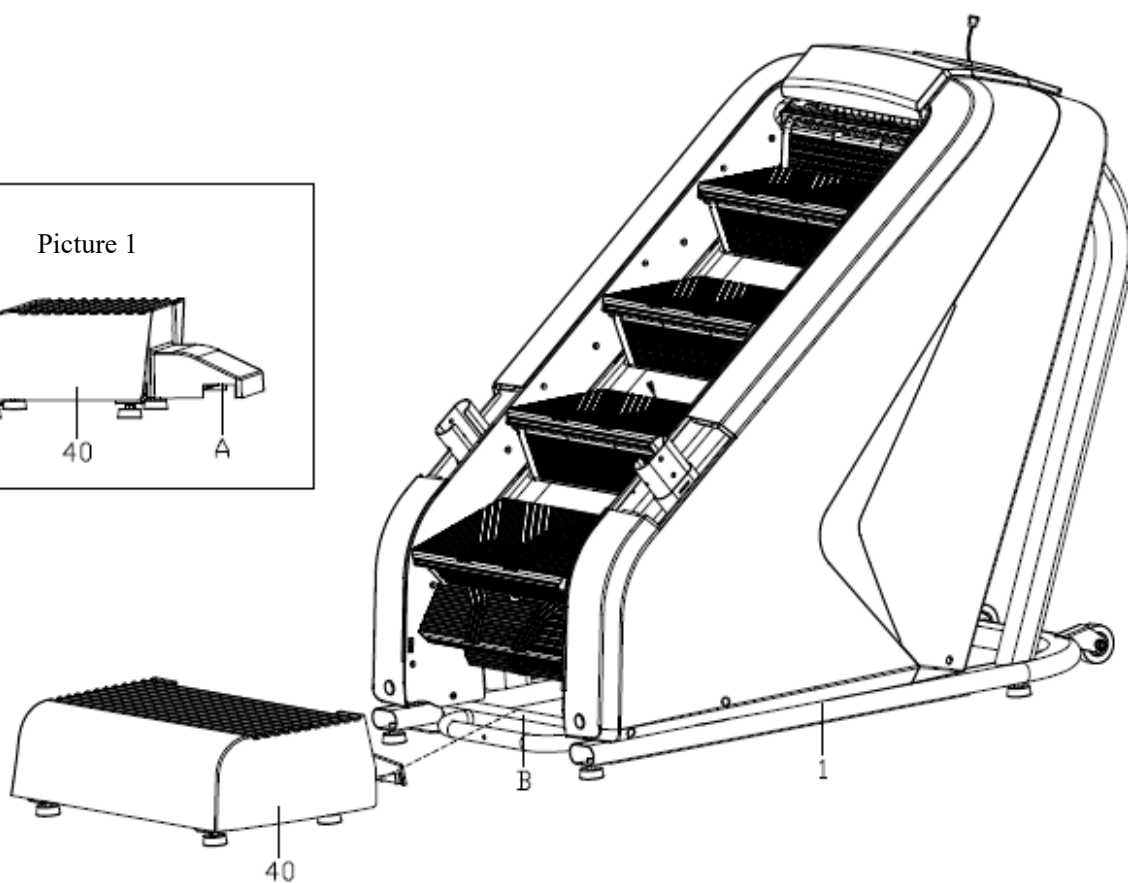
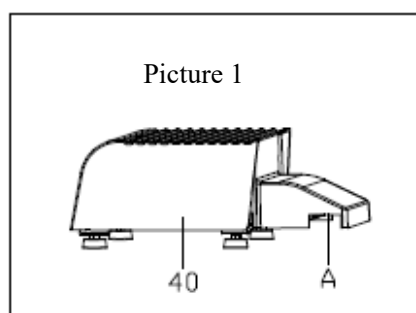
Ed : 11/24



ASSEMBLY STEPS

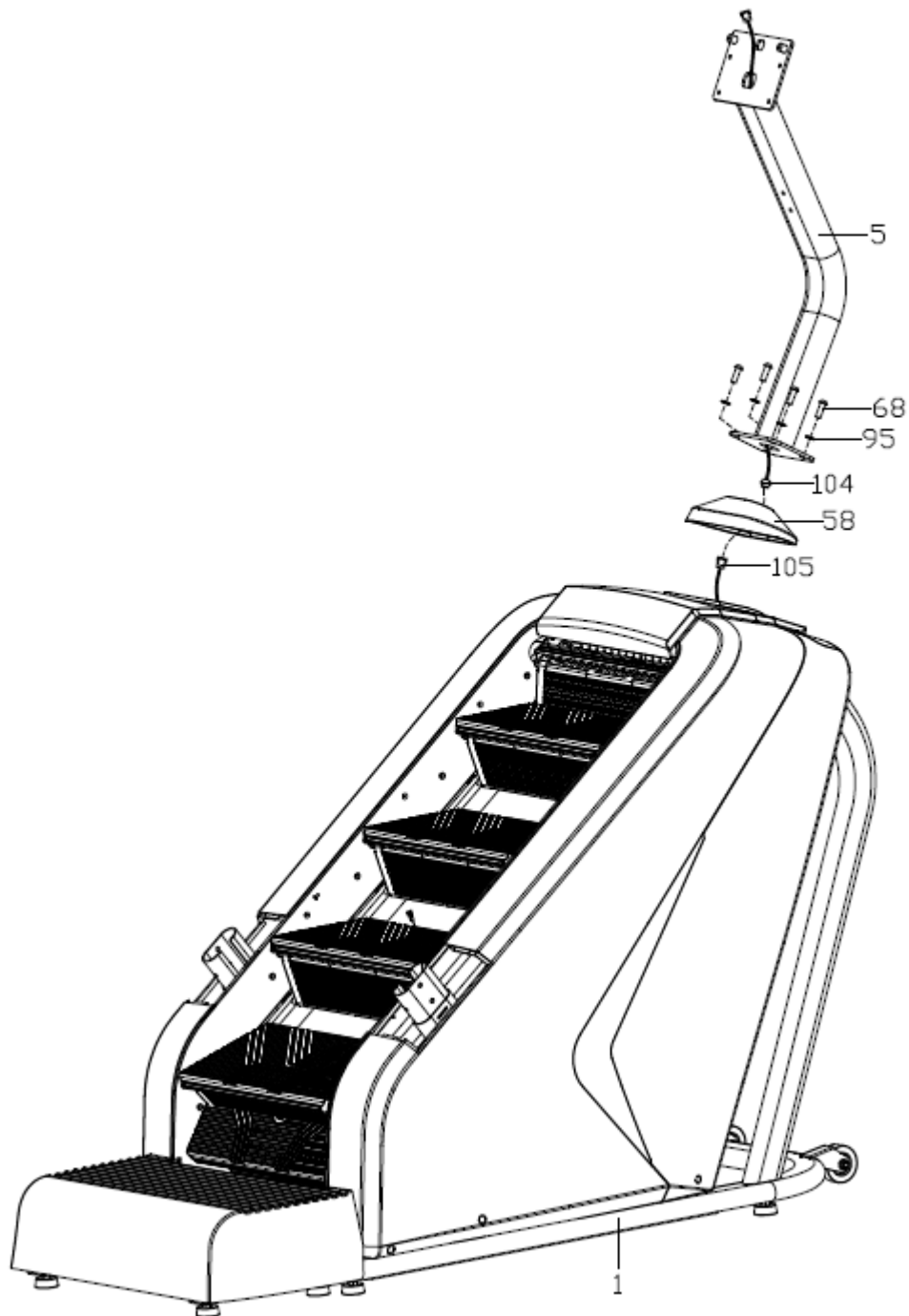
STEP 1:

1. Open the package, take out all parts and place the main frame on the flat ground.
2. Fasten the part A of pedal (40) to the part B of the main frame (1) ; Please make sure the two parts are centered.



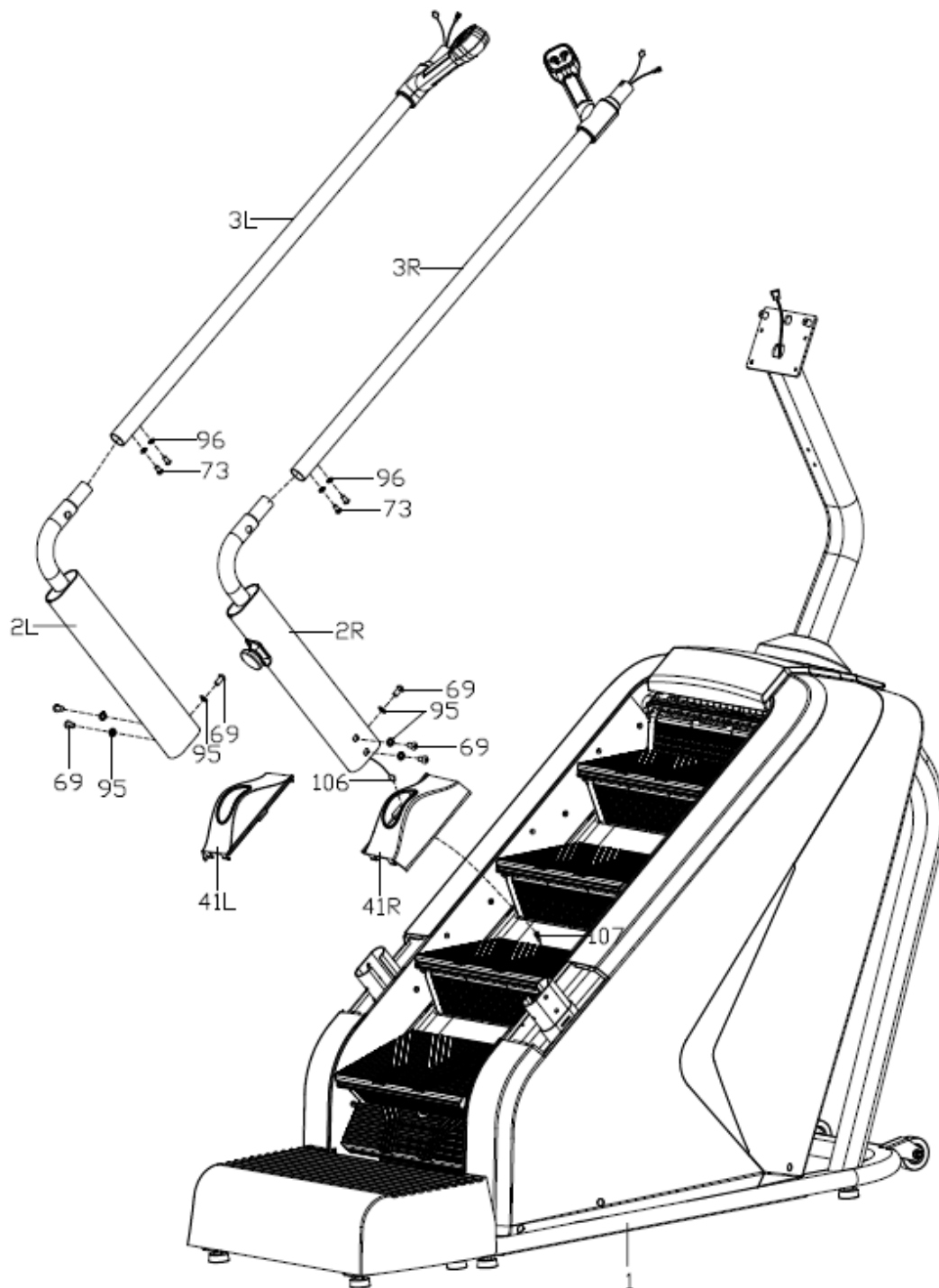
STEP 2:

1. Connecting the Console extension wire (104) to the lower wire (105);
2. Assemble the support column (5) on the main frame (1) with screw (68), and washer (95); DO NOT TIGHTEN NOW.
3. Remove the decorative cover (58), and then insert the decorative cover (58) to the support column (5), then buckle it on the main frame (1).



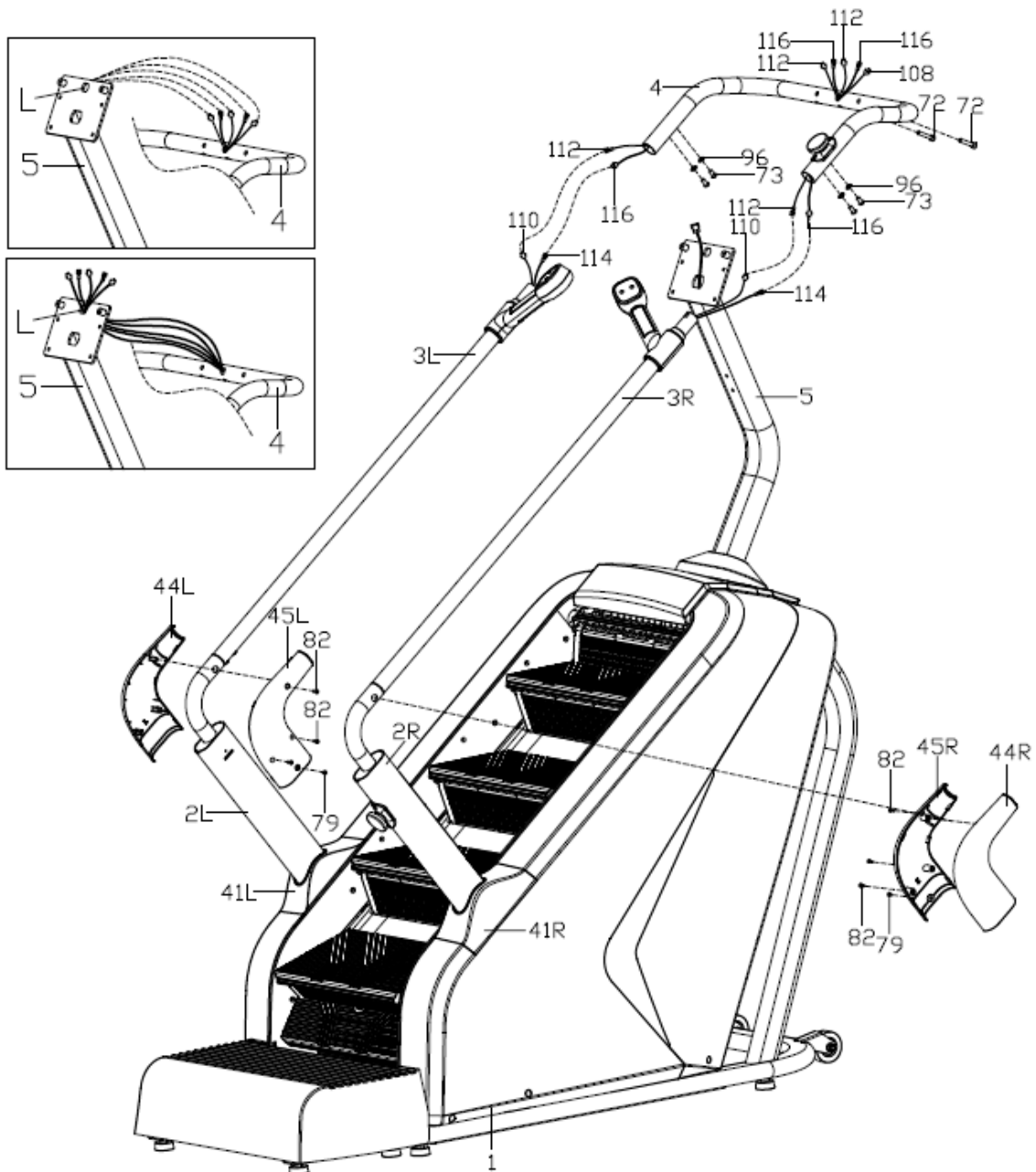
STEP 3:

- 1: Pass the Switch lower wire 2 (106) through the right decorative cover (41R) to connect with the Switch upper wire 2 (107);
- 2: Insert the decorative cover (41L / R) on the support column (2L / R), assemble but not tighten the support column (2L / R) on the main frame (1) with screw (69) and washer (95), (DO NOT TIGHTEN NOW)
- 3: Assemble but not tighten the handrail (3L/R) on the support column (2L / R) with screw (73) and washer (96).



STEP 4

- 1: Connect the Pulse upper wire(110)with Pulse extension wire(112)、Key board Upper wire(114)and Key board extension wire(116);
- 2: Insert the rear handrail (4) to the handrail (3L / R), then assemble but not tighten the rear handrail (4) to the handrail (3L / R) with screw (73) and washer (96); DO NOT TIGHTEN NOW.
- 3: Thread the Pulse extension wire (112)、Key board extension wire (116)、 Switch lower wire 1 (108)of the rear handrail (4) through the L hole of the support column (5).
4. Lock the rear handrail (4) on the support column (5) with Allen bolt (72); DO NOT TIGHTEN NOW.
- 5: Tighten all the screws now;
- 6: Fasten the decorative cover (41L / R) on the main frame (1);
- 7: Lock the decorative cover (44L/ R) and (45L / R) on the support column (2L / R) with screw (79) and (82).



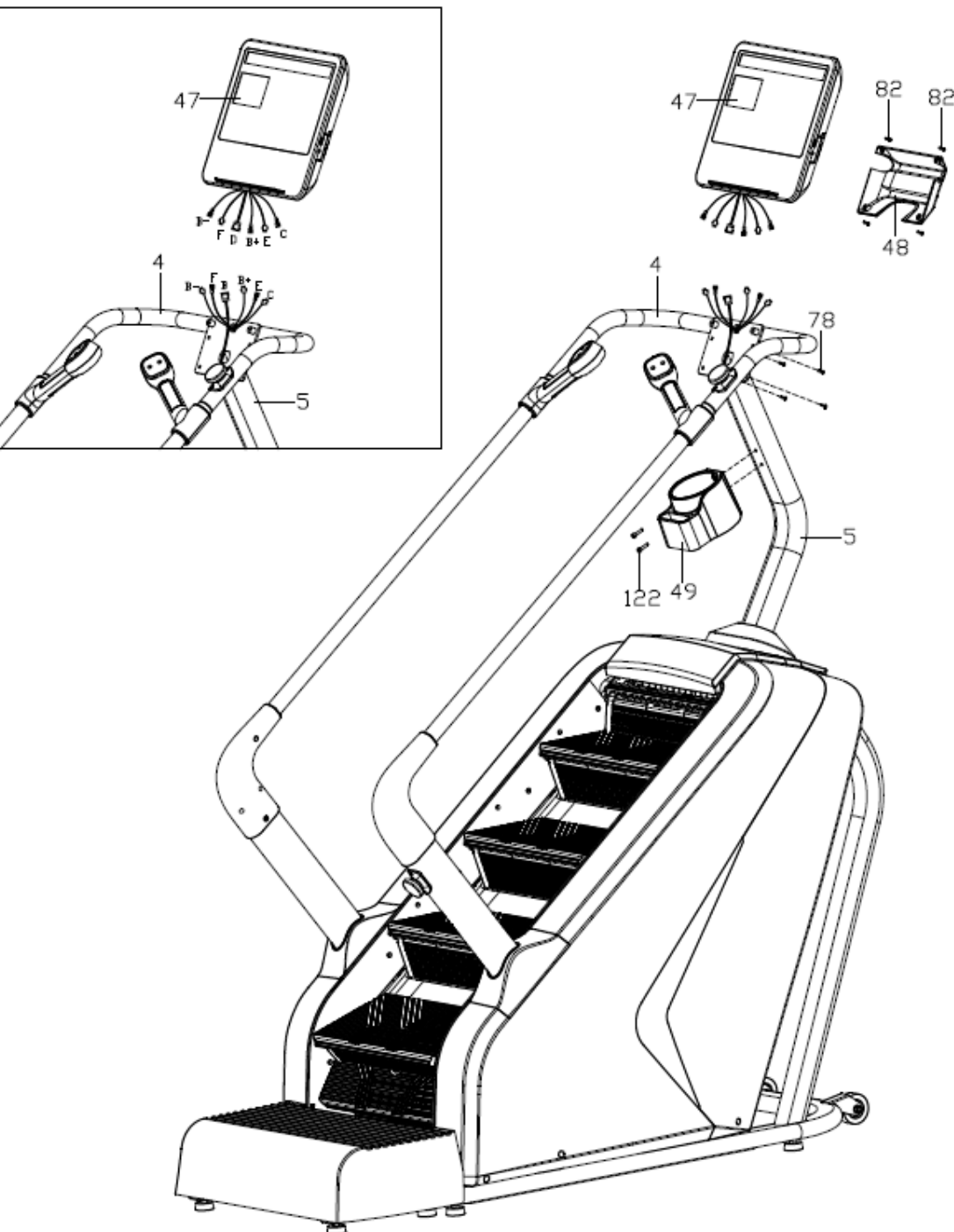
STEP 5:

1: As shown in Figure 1, connect the wires on the console (47) with the corresponding on the rear handrail (4) and the console support column (5); (matched by the same wire number)

2: Tighten the console (47) on the support column (5) with screw (78), then lock the decorative cover (48) on the console (47) with screw (82);

3: Lock the water bottle holder (49) on the support column (5) from top to bottom; tighten with bolt (122).

1



GROUNDING METHODS

This product must be grounded. If it should malfunction or breakdown, grounding provides a path of least resistance for electric current to reduce the risk of electric shock.

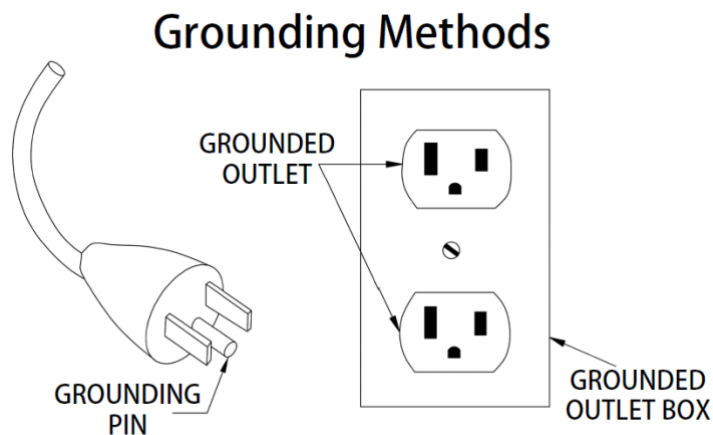
This product is equipped with a cord having an equipment-grounding conductor and a grounding plug. The plug must be plugged into an appropriate outlet that is properly installed and grounded in accordance with all local codes and ordinances.

DANGER – Improper connection of the equipment-grounding conductor can result in a risk of electric shock. Check with a qualified electrician or serviceman if you are in doubt as to whether the product is properly grounded.

Do not modify the plug provided with the product – if it will not fit the outlet, have a proper outlet installed by a qualified electrician.

This product is for use on a nominal **220-volt** circuit and has a grounding plug that looks like the plug illustrated in **sketch A** in following figure. Make sure that the product is connected to an outlet having the same configuration as the plug.

No adapter should be used with this product.

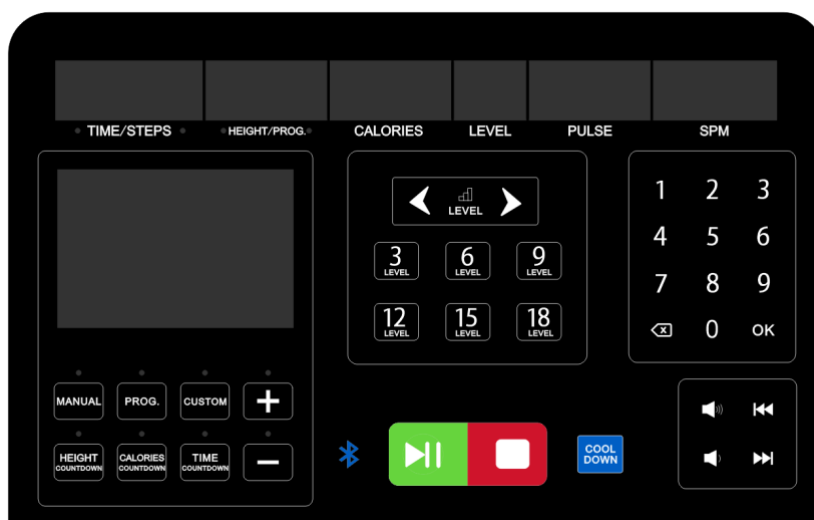


PARTS LIST

Part No.	Description	Qty	Part No.	Description	Qty
1	Main frame	1	63	EVA silencing pad	16
2L/R	Support columns	1 p.r.	64	Roller	2
3L/R	Handrails	1p.r.	65	Allen bolt M10 * 40	4
4	Rear handrail	1	66	Allen bolt M10 * 170	2
5	Console support column	1	67	Outer hexagon bolt M10 * 45	2
6	Rear pedal	1	68	Allen bolt M10 * 30	4
7	Front roller	1	69	Allen bolt M10 * 20	6
8	Rear gear	2	70	Allen bolt M8 * 105	10
9	Sensor fix tube	1	71	Allen bolt M8 * 75	3
10	Light sensor support	1	72	Allen bolt M8 * 40	2
11	Baffle	1	73	Large flat head bolt M8 * 15	8
12	Fixing plug	6	74	Flat end tightening M4 * 5	3
13	Stair support 1	8	75	Allen bolt M6 * 25	4
14	Stair support 2	8	76	Flat end tightening M5 * 10	3
15	Hole plug	2	77	Phillips screw w/cushion head ST4 *12	16
16	Cover fixing	2	78	Phillips screw w/ washer head M4 * 15	18
17	Pulley shaft sleeve	1	79	Phillips screw w/ washer head M4 * 8	2
18	Emergency stop disk sleeve	1	80	Phillips screw w/countersunk head M4*10	9
19	Rear roller shaft	1	81	Phillips screw ST4 0*16	2
20	Guide	2	82	Phillips screw ST4 0*16	90
21	Guide2	2	83	Phillips screw ST4 0*10	32
22	Support sleeve 1	2	84	Phillips screw M3 * 20	2
23	Support sleeve 2	8	85	Phillips screw m3 * 15	4
24	Bearing connecting shaft	16	86	Phillips screw ST2 9*9.5	23
25	Step connecting shaft	8	87	Phillips screw ST2 2*8	8
26	Chain	2	88	Nylon nut M10	2
27	Emergency stop plate	1	89	Nylon nut M8	10
28	Belt pulley	1	90	Nut M8	11
29	Foot pad	8	91	Nylon NUT M6	4
30	Bearing 608Z	32	92	Outer snap ring Φ 20	4
31	Bearing 6004	4	93	Outer snap ring Φ 8	32
32	KP005 pedestal bearing	2	94	E-type snap ring Φ 7	24
33	brake combination	1	95	Internal serrated washer Φ 10*1.2	12
34L/R	Protective cover	1p.r	96	Internal serrated washer Φ 8*1.2	8
35L/R	Inner protective cover	1p.r	97	Standard spring washer Φ 10	4
36L/R	Decorative strips	1p.r	98	standard flat washer Φ 10	4
37	Upper protective cover	1	99	Flat washer Φ 8	32

38	Upper protective cover 2	1	62	Anti slip pad	1
39	Rear cover	1	100	Flat washer Φ 6	4
40	Pedal	1	101	Controller	1
41L/R	Decorative cover	1p.r	102	Power cord	1
42L/R	Upper cover	1p.r	103	Console upper wire	1
43L/R	Lower cover	1p.r	104	Console extension wire	1
44L/R	Exterior decorative cover	1p.r	105	Console lower wire	1
45L/R	Interior decorative cover	1p.r	106	Switch lower wire 2	1
46	Cross hex M5*16	3	107	Switch upper wire 2	1
47	Console	1	108	Switch lower wire 1	1
48	Rear decorative cover	1	109	Switch upper wire 1	1
49	Bottle Holder	1	110	Pulse upper wire	2
50	Emergency stop switch	2	111	Distance sensor	1
51	Switch base 1	1	112	Pulse extension wire	2
52	Switch base 2	1	113	Pulse lower wire	2
53	Step spacer 1	16	114	Key board Upper wire	2
54	Step spacer 2	16	115	Light sensor	1
55	Wear washer	40	116	Key board extension wire	2
56	Pedal 1	8	117	Key board lower wire	2
57	Pedal 2	8	118	Infrared sensor	2
58	Decorative cover	1	119	Speaker	2
59	Bottom baffle	1	120	USB / headset interface	1
60	Middle baffle	1	121	Hole plug 2	2
61	Belt	1	122	Bolt M6*25	2

Computer instructions



1. Window display:

- “TIME/STEPS” window: Movement time or number of steps is displayed, and switch display every 5 seconds. When the movement time is displayed, the forward time is from 0:00 to 99:59, Time to 99: 59 machine smoothly slow down to stop running; the countdown decreases from the set time to zero, when the countdown to 0:00 the machine smoothly slow down to stop running. When the number of steps is displayed, it indicates the actual number of steps.
- “HEIGHT/PROG” window: Displays the motion height or the program sequence number (unit: meter). The motion height is displayed, the forward count ranges from 0.0-999, and the reverse count decreases from the set value to zero. When the backward count reaches 0, the machine stops running smoothly. Indicates the current program number when in program Settings mode and the current segment number when in custom program Settings
- “CALORIES” window: Displays the number of calories consumed, forward counting from 0.0-999, when counting in reverse, it is counted backwards from the set value to 0, and when it is counted backwards to 0, the machine stops smoothly.
- “LEVEL” window: Display gear value, display gear in the running state, display range 1-25
- “PLUSE” window: Displays the heartbeat value of the user. When the athlete holds the heartbeat induction hand knob, the system can automatically detect the heartbeat frequency of the user and display it in this window. The heartbeat value display range is 50-200 times / minute. (This data is for reference only and cannot be used as medical data.)
- “SPM” window: Display the machine speed and the running speed.
- “lattice” window: Program mode displays program diagram and other modes display floor runway (3.5 m per floor).

2. Key function:

- a. “Manual / program / custom” is for standby and program, custom interswitch keys: manual can quickly cut back to the standby state. Programs can be quickly switched to fixed programs. Custom can quickly switch over the

-
- custom program. In this mode, press the confirmation key of the 3 * 4 small keyboards to enter the setting of the custom program segment. You can quickly set the parameters through the parameter "Set + -" during this period.
- b. "Time / Distance / calorie" is the mode mutual switch key: time can quickly turn on the time counter mode. You can quickly set the parameters through the parameter "Set + -" during this period. Distance can quickly turn on distance counter mode. Calories can quickly turn on calorie counter mode.
 - c. "Start/Pause" key: The two scram switches are rotated out and ensure that the infrared sensing area is free of obstructions. Press this key at any time to start the machine. Also can press this key to pause the machine during operation.
 - d. "Stop" key: During the movement, this key is used to stop the operation of the machine and reset the zero.
 - e. "Cool down" key: Press this button during the movement according to the actual operation of the current machine (non-set) gear value. Determine the countdown period, gear evenly down, stop when the countdown period ends. (When the gear is 1-15, press the cool down button and the gear will drop to 0 within 30 seconds, and the array window will display a 30-second countdown. When the gear is 16-25, press the cool down button and the gear will drop to 0 within 45 seconds, and the array window will display a 45-second countdown).
 - f. "GEAR +", "GEAR -" key: Standby state, to adjust the set value. After startup, it is used to adjust the gear, and its adjustment amplitude value is 1 each time, which will automatically continuously increase or decrease when pressed for more than 0.5 seconds.
 - g. "GEAR: 3、6、9、12、15、18" For gear shortcut key: gear can be quickly set.
 - h. "3*4 keypad " (Hereinafter referred to as the "keypad"): In a running or setting state, press the keypad number key to quickly set the parameter value, and clear key clears the input value. The confirmation key sets the parameter to the input value. If it exceeds the set range, it will be automatically set to the maximum or minimum value
 - i. Music Bluetooth /USB play control key: volume up / volume down control the music volume when playing. Previous song/next song can quickly switch songs

3. Quick Start (Manual mode):

- Turn on the power switch, spin out the two scram switches, and ensure that the infrared sensing area is free of obstructions.
- Press the "START" key, the system enters the 3 seconds countdown, and the buzzer

sound, at the same time the speed window shows the countdown number, after the 3 seconds countdown, the treadmill starts running at a speed of 1 gear.

- After startup, use the SPEED + and SPEED- keys to adjust the speed of the machine as needed.

4. Operation during the movement process:

- a. Press "GEAR +" key will increase the running speed of the machine.
- b. Press "GEAR -" key to reduce the running speed of the machine.
- c. Press "keypad " key to set the machine speed quickly.
- d. Press "STOP "key will slow down to stop running.
- e. Press "START" key will slow down to suspend running.
- f. The heartbeat data is displayed for about 3 seconds when the user holds the heartbeat handle with both hands.

5. manual mode :

- a. In the standby state, press the "Start" button directly, and the machine starts to run in gear 1; Other Windows count forward from 0, press the "gear +-" key to change and speed.
- b. In the non-running state, press the "Manual/program/Custom/time/ Distance /calorie" key to quickly switch modes. After switching modes (except manual mode), you can set the relevant parameter values by setting the "Parameter + -" key.
- c. After setting the mode, select one of the Settings and press the start button. The machine will start running after 3 seconds delay. Press the "gear + -" button to adjust the gear; Press the stop button to stop the machine.

6. running mode:

- a. In the standby state, directly press the "Start" key, and the machine starts to run at 1 gear speed. Other Windows count forward from 0, press the "gear + -" "keypad" key to change the gear speed.
- b. Press the "time" key to enter the time backward counting mode. The "Time" window displays "15:00" and blinks. Press the "Gear + -", "Parameter + -" and "Keypad" keys to set the movement time, which ranges from 5:00 to 99:00.
- c. Press the "DISTANCE" key to enter the distance backward counting mode, and the "dist" window displays "10.0" and blinks. Press the "Gear + -", "Parameter + -" and "keypad" keys to set the moving distance, and the range of distance setting is 5.0-999.
- d. Press the "Calorie" key to enter the calorie backward counting mode. The "cal" window displays "50.0" and blinks. Press the "Gear + -", "Parameter + -" and "keypad" keys to set calories, which ranges from 10.0 to 999.
- e. Select one of the three backward counting modes and press the start key

after the setting is completed. The machine will start to run after 3 seconds. You can change the gear of the current operation through the control button, or you can stop the machine.

7. Programs:

This system has a total of 36 built-in programs P01-P36, in the non-running state, press the "program" key program window display "P01-P36", select the favorite program, while the "TIME" window flashes; Display the preset time 10:00, press "gear + -" "Parameter + -" "keypad" to set the required exercise time, and then press "Start" to start the built-in program, the built-in program is divided into 20 segments, each segment of exercise time = set time /20. When entering the next segment, the system will produce "Bi-Bi-Bi-" 3 sound prompts, and the speed of the system will change with the change of the program segment, during which you can press "gear +-" and other keys to change the speed value, but when the program enters the next segment, the speed of the segment will be restored. After running a program, the system will issue "Bi-Bi-Bi" 3 sound prompts. The machine stops running at a steady speed and displays "End". It enters the standby state 5 seconds after it stops completely.

8. Program specification:

Each program divides the movement time into 20 equal parts, and each time period has a corresponding speed.

Program schedule:

	S1	S2	S3	S4	S5	S6	S7	S8	S9	S10	S11	S12	S13	S14	S15	S16	S17	S18	S19	S20
P1	4	5	5	6	6	7	7	7	7	7	7	7	7	7	6	6	5	5	1	
P2	4	5	5	6	7	7	10	7	10	10	10	7	10	10	7	7	6	5	5	1
P3	4	5	5	6	7	7	10	10	7	10	10	10	10	7	7	7	6	5	5	1
P4	4	5	5	6	6	9	9	9	9	9	9	12	9	9	9	6	6	5	5	1
P5	4	5	5	6	7	9	9	9	9	12	9	9	9	9	9	7	6	5	5	1
P6	4	5	5	7	7	9	9	12	12	12	12	9	9	9	9	9	7	5	5	1
P7	4	5	6	8	8	11	11	11	11	11	11	11	11	11	11	11	8	6	6	2
P8	4	5	5	7	7	10	10	10	10	12	12	12	12	12	12	12	12	12	11	4
P9	4	5	5	8	8	11	11	11	9	11	11	11	11	11	11	11	8	5	5	2
P10	4	5	5	7	7	9	5	7	7	9	5	7	7	9	5	7	7	9	7	3
P11	4	6	6	8	8	11	6	8	8	11	6	8	8	11	6	8	8	11	6	1
P12	4	6	6	9	12	12	6	9	12	12	6	9	12	12	6	9	12	12	9	4
P13	4	9	4	9	4	9	4	9	4	9	4	9	4	9	4	9	4	9	4	9
P14	4	5	5	8	11	11	5	8	11	11	5	8	11	11	5	8	11	11	8	3
P15	4	6	9	9	9	6	9	9	9	6	9	9	9	6	9	9	9	6	4	2
P16	4	6	6	11	6	11	6	11	6	11	6	11	6	11	6	11	6	11	6	9
P17	4	4	4	6	8	8	11	11	11	4	6	8	8	11	11	11	8	4	4	2
P18	5	8	5	8	8	5	8	8	5	8	8	5	8	8	5	8	8	4	4	2
P19	4	9	4	9	4	9	4	9	4	9	4	9	4	9	4	9	4	9	4	2
P20	4	12	4	12	4	12	4	12	4	12	4	12	4	12	4	12	4	12	4	4
P21	4	8	4	8	11	4	8	11	4	8	11	4	8	11	4	8	11	4	8	2
P22	6	8	11	8	4	11	8	4	11	8	4	11	8	4	11	8	4	4	6	2
P23	6	8	11	8	8	4	11	8	8	4	11	8	8	4	11	8	8	4	4	2
P24	6	8	11	8	6	11	8	6	11	8	6	11	8	6	11	8	6	4	6	2
P25	4	6	5	6	5	7	6	4	7	4	8	4	9	4	10	5	9	5	11	3
P26	4	7	6	8	6	8	6	4	6	5	5	8	7	9	7	9	7	5	7	2
P27	4	7	6	7	6	7	6	4	5	5	5	8	7	8	7	8	7	5	6	2
P28	4	8	9	6	6	9	6	4	6	5	5	9	10	7	7	10	7	5	7	2
P29	4	6	8	10	9	10	8	4	5	5	5	7	9	11	10	11	9	5	6	2
P30	4	6	7	7	8	7	8	5	5	5	5	7	8	8	9	8	9	6	6	2
P31	5	8	9	7	10	7	11	8	6	4	6	9	10	8	11	8	11	9	6	3
P32	4	7	8	6	9	7	8	7	5	5	5	8	9	7	10	8	9	8	6	3
P33	4	10	8	6	7	11	9	7	6	6	5	11	9	7	8	11	10	8	7	3
P34	4	5	7	5	5	7	5	8	5	6	5	6	8	6	6	8	6	9	6	3
P35	4	7	10	11	8	11	7	5	4	5	5	8	11	11	9	11	8	6	5	2
P36	4	7	7	6	6	8	6	4	5	7	5	8	8	7	7	9	7	5	6	4

9. User custom program:

In addition to the built-in system, the machine also has three user custom programs that allow users to set according to their personal situation: U01, U02 and U03.

a. Settings of user custom programs:

Press the "Customize" key until the desired user-defined program (U01-U03) is set, and then press the keypad "Confirm key" to confirm the setting, and then set the first segment. When setting, use the "gear + -", "Parameter + -" and "keyboard" keys to set the segment gear. Press "Confirm" and "Customize" keys on the keypad to complete the setting of the first time period and enter the setting state of the second time period until all 20 time periods are set; After the setting is complete, the data will be permanently saved until you reset the next time, and this data will not be lost due to power failure.

b. Start of a user custom program:

- i. Press the "Customize" key until you want to set the user-defined program (U01-U03), and set the running time and press the start key to start.
 - ii. Press the Start button to start the customized program and run time immediately after setting.
- c. User custom program setting instructions: Each program divides the movement time into 20 time periods. The speed and running time of all 20 time periods must be set before the start key can be pressed to start the machine.

10. Body fat :

In the standby state, continuously press the "Program" key to enter the body Mass index (FAT) detection function, and press the "Confirm" key of the keypad for the first time to enter F-1. Then press "Confirm" or "Program" to quickly switch the F-2, F-3, F-4, F-5 interface (F-1-gender, F-2 - age, F-3 - height, F-4 - weight, F-5- physical test). Press the "gear + -", "Parameter + -" and "keyboard" keys to set the parameters of F-1-F-4 (parameters in the following table). After setting, enter the F-5 physical detection interface. At this time, after holding the heart rate board with both hands for 2-3 seconds, your body mass index will be displayed to check whether your weight and height are commensurate. Body mass index (FAT) is a measure of a person's height and weight, not body proportion. FAT is suitable for any man and woman, and along with other health indicators, it provides a basis for people to adjust their weight. The ideal FAT should be between 20 and 25, with anything below 19 being too thin, anything between 25 and 29 being overweight, and anything above 30 being obese. (This data is for reference only and should not be considered as medical data).

F-1	Gender	01 (man)	02(woman)
F-2	Age	10-----99	
F-3	Height	100-200 (cm)	
F-4	Weight	20-150 (kg)	
F-5	FAT	≤19	Underweight
	FAT	=(20---25)	Normal weight
	FAT	=(26---29)	Overweight
	FAT	≥30	Obesity

11. Display range for each value:

Set parameters	Initial value	Set initial value	Setting range	Display range
TIME (minute: second)	0:00	15:00	5:00-99:00	0:00-99:59
GEAR (level)	1	1	1-25	1-25
Step number (step)	0	N/A	N/A	0-9999
Height (meter)	0.0	10.0	5.0-999	0.0-999
Heart rate (times / min)	P	N/A	N/A	50-200
CALORIE (KCAL)	0.0	50.0	10.0-999	0.0-999
SPM (Revolution)	0	N/A	N/A	0-999

12. Safe lock function:

In any state, the emergency stop button can be snapped to stop the operation of the machine, the machine emergency stop, "all Windows" display "--", the buzzer issued "BB" alarm 3 sound; At this time, the machine cannot perform any other operation except shutdown, turn the emergency stop switch clockwise, the machine re-enters the standby state, waiting for input instructions.

13. Power saving mode

This system has the power saving function, in the standby state if there is no key instruction input within 10 minutes, the system enters the power saving mode, automatically closes the display, press any key to reawaken the system.

14. Headphones/Music Bluetooth /USB/ Wireless charging function (optional):

Headphone: audio output

Music Bluetooth: Connect the mobile phone music Bluetooth can play music.

Music Bluetooth name: SYMK

USB interface: Read the audio data of the U disk

Wireless charging: Can be used to charge mobile phones with wireless charging function.

15. shut down

You can turn off the machine at any time by turning off the power switch, which does not damage the treadmill.

16. Precautions

- a. Check the power supply before exercise; check whether the safety lock is valid.
- b. If there is an abnormal situation during the movement, shoot the emergency stop switch and the machine will stop quickly; Turn out the emergency stop switch clockwise, reset the device, and wait for the input command.
- c. Non-professional personnel do not disassemble or repair the equipment to avoid damage.
- d. During operation, any object entering the infrared sensing area will immediately stop the machine. After removing the blocked foreign matter, press any button to eliminate the alarm interface.



GARLANDO SPA
Via Regione Piemonte, 32 - Zona Industriale D1
15068 - Pozzolo Formigaro (AL) - Italy
contact@toorxprofessional.it
www.toorxprofessional.it